



MAGNETIC MAHARASHTRA

#MadeForBusiness



Government of
Maharashtra



Sweden - Maharashtra Trade and Investment Profile



Economic Relations Overview



The bilateral trade between India and Sweden for FY 2019-20 totaled USD 1.8 billion.



India's exports to Sweden amounted to USD 748.42 Mn while India's import from Sweden amounted to USD 1.17 billion.



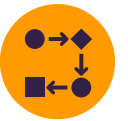
Sweden ranked 56th among the major trading partner countries in the year 2019-20.



Sweden ranks 22nd in terms of cumulative FDI inflows USD 1.61 billion in between Jan 2000 to Dec 2019.



As per 2019-20 data, there are 200 Swedish joint ventures and wholly owned subsidiaries in India.

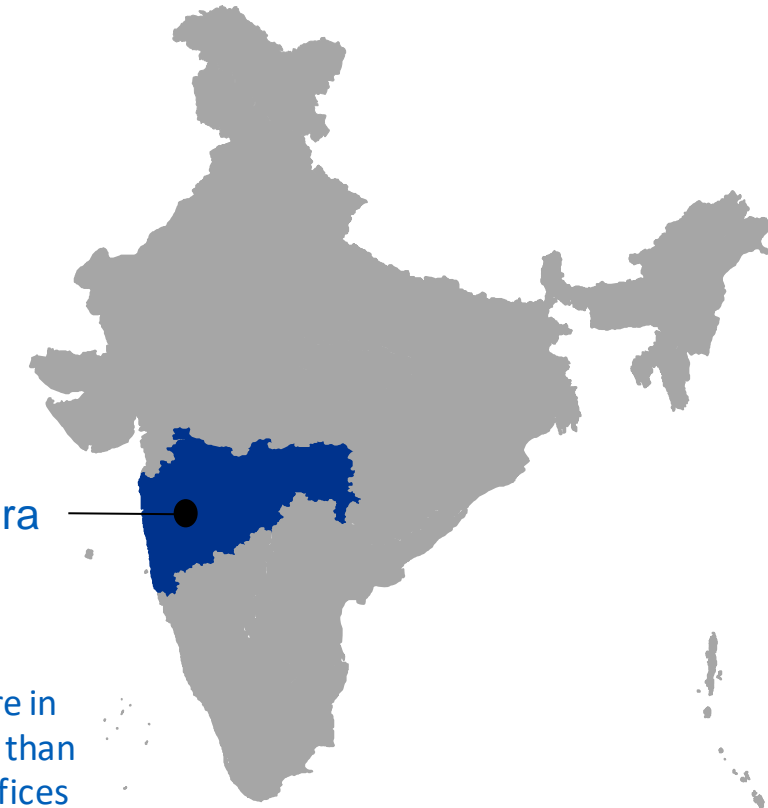


Indian investment in Sweden has increased over the last decade. There are over 70 Indian companies including IT companies currently present in Sweden.

Maharashtra is the biggest and the most attractive investment destination in India with robust policies, mature infrastructure and skilled manpower.

#3

India is Sweden's
third largest
trading partner in
Asia.



Maharashtra

53.5%

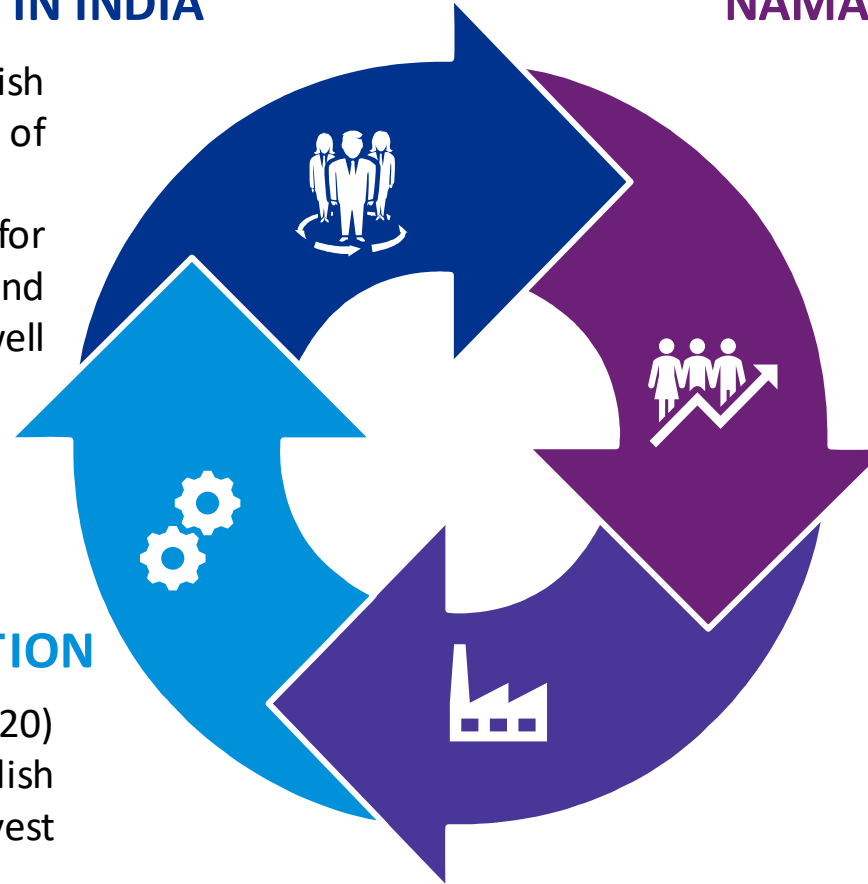
Swedish companies are in
Maharashtra and more than
half have their head offices
in the state

SWEDISH CHAMBER OF COMMERCE IN INDIA

- The SCCI community consists of Swedish companies from all sectors and stages of establishment in India.
- Provides members with opportunities for continuous learning and development, and platforms to leverage the community as well as individual member companies.

ATTRACTIVE INVESTMENT DESTINATION

- In the Business Climate Survey (2019-20) conducted by SCCI, about half of the Swedish companies in India (95), said they will invest in Maharashtra in the coming years.



NAMASTE STOCKHOLM/ UNLIMITED INDIA

- A prominent annual cultural event organized by the Embassy of India.
- The event exposes Indian culture to Swedish people through dance performances, music, food, and culture from India.

A SWEDISH MANUFACTURING HUB

- 107 companies are present in Maharashtra. Maharashtra is the manufacturing hub with 26 companies having production plants, majority in Pune

- An MoU was signed between SCCI and Maharashtra State Skill Development Society under at the Magnetic Maharashtra (2018) event to skill, train and create readily employable women for the industry

Key Swedish Companies in Maharashtra





For Market Insights and Data analytics

Trade Data: [Link](#)

Investment Data: [Link](#)

Sector Trends: [Link](#)

MIDC: [Link](#)

State Policies & Permissions: [Link](#)

Annual Economic Survey Maharashtra: [Link](#)

Government of Maharashtra: [Link](#)

Embassy of India in Sweden: [Link](#)

Embassy of Sweden in India: [Link](#)



Connect with business chambers

Swedish Chamber of Commerce India: [Link](#)

Telephone: +91 11 4419 7100

Email: info@swedishchamber.in



Embassy contact details

Telephone: +91 11-2687-6581

Email: ambassaden.new-delhi@gov.se



List of Policies and Incentives

Package Scheme of Incentives 2019: [Link](#)

Maharashtra Industrial Policy 2019: [Link](#)

Thank You



Government of
Maharashtra



Maharashtra Industrial Development Corporation

Udyog Sarathi, Mahakali caves road,

Andheri (E), Mumbai – 400 093

Board Number: 91-22-26870027/52/54/73

Fax: 91-22-26871587

Email: ceo@midcindia.org

Website: www.midcindia.org

#MadeForBusiness